

# Helix Test Case Management Quick Start Guide

This guide is provided to help you get started with test case management in Helix ALM and answer common questions about working with test cases and test runs. Your use of Helix ALM may be different based upon your organization's testing process, but the same basic concepts apply.

**Note:** The information in this guide applies to the Helix ALM Client. Test case management is also supported in Helix ALM Web. See the [Helix ALM Web help](#) for information.

## How does our manual process translate to Helix ALM?

Helix ALM is ready to use out of the box, but can also be customized to fit your terminology, methodology, and regulations. Before your organization begins to use Helix ALM, it is important to take the time to evaluate and document each step in your testing process. Consider the following questions:

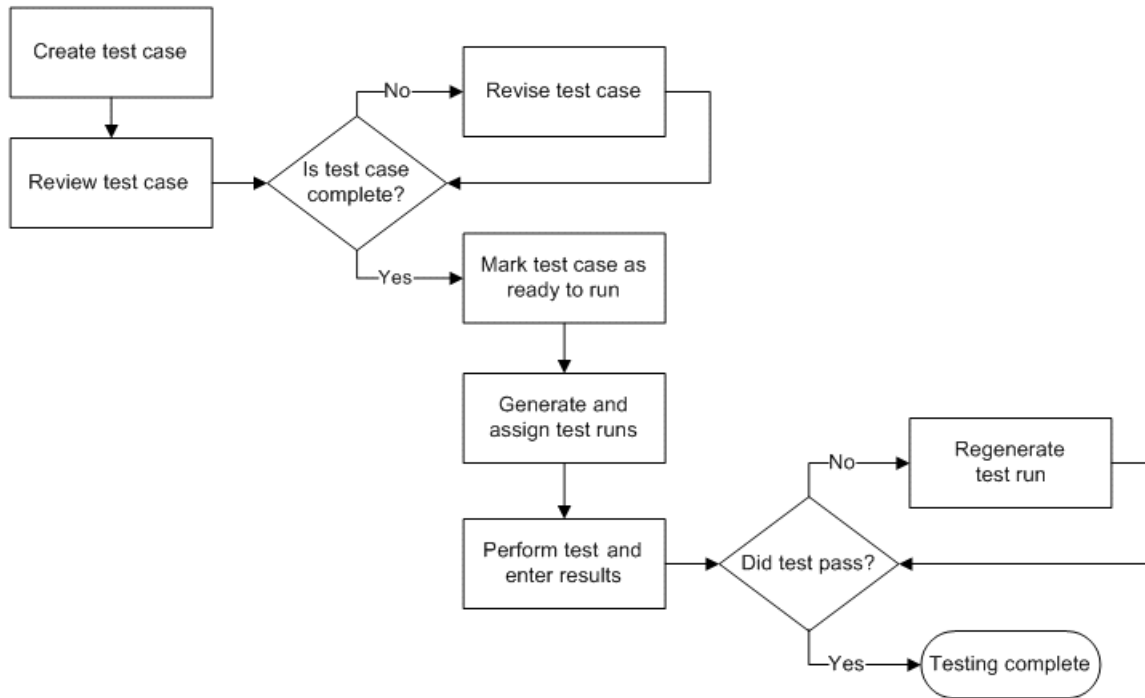
- What actions need to be performed?
- Who is responsible for performing each action?
- What data needs to be tracked for each action?
- What is required to move to the next step in the process?
- What business or compliance rules do you need to enforce in the process?

Answering these questions can help you determine how to use Helix ALM to automate your process. The Helix ALM administrator or another high-level user is generally responsible for customization.

## Workflows

Helix ALM includes default test case and test run workflows. To move a test case or test run through the workflow, it is assigned to users who perform the required work. The workflows can be customized to adapt to your testing process or used as is.

The following diagram shows a high-level overview of the testing process supported by the default workflows.

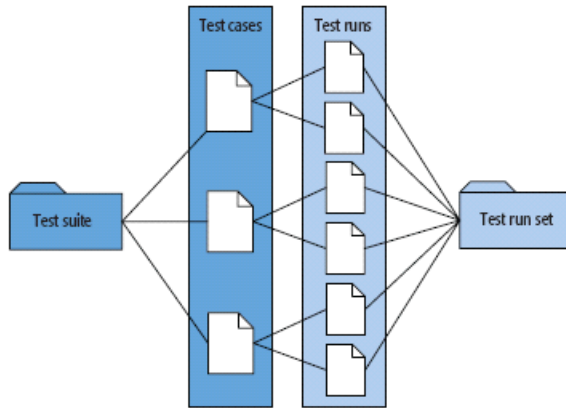


## Test items

The test items used in your manual process are all represented in Helix ALM. In your process, you may have created a checklist of items to test. When a new product version required testing, you printed the checklist and wrote the test results on it. These items are all used in Helix ALM.

- The checklist is a test suite. In Helix ALM, you use test case suite folders to group related test cases. You can also group related test runs in test run suite folders.
- Each line in the checklist is a test case.
- The printed checklist is a test run set. In Helix ALM, you can add new test runs to test run sets, which can help you report on each test initiative and determine the current status.
- Each item in the printed checklist is a test run. In Helix ALM, test runs are generated from test cases at a milestone in the testing process. Testers use test runs to perform a test and enter the results.

The following diagram shows the relationship between these components.



## How do I access test case management?

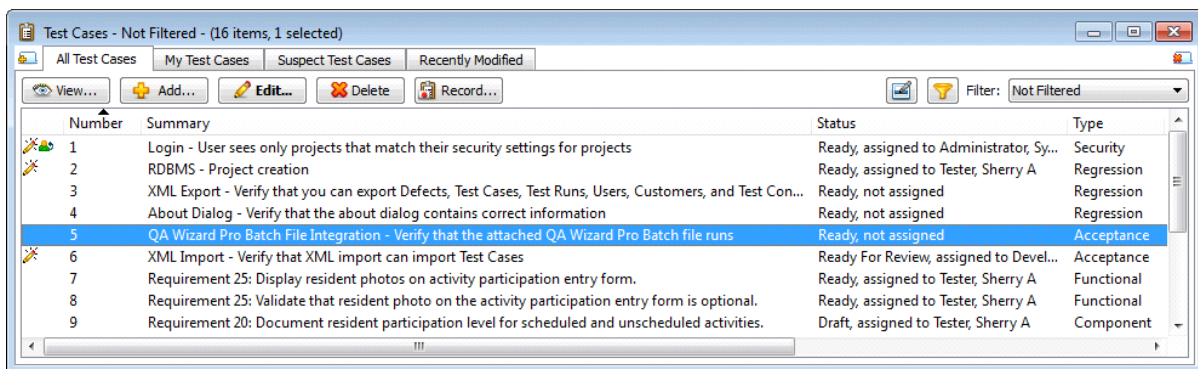
Features for test case, issue, and requirements management are installed with Helix ALM. To access test case management features:

- You must have a valid test case management license to work with test cases and test runs, even if you can already work with issues or requirements.
- Make sure your Helix ALM administrator provided the Helix ALM Server connection information and your username and password.
- When logging in, expand **Log in to** on the Helix ALM Project Selection dialog box and select **Test case management**.
- If you cannot access test case management features, the administrator may need to enable test case management for the project. Choose **Tools > Administration > Project Options**. In the General category, select **Allow users to access test cases and test runs**, and click **OK**. Users must log in to the project again.

## What are test cases?

Test cases include all information about a test, including the description, scope, conditions, detailed steps, expected results, scripts, and other test data. Each test case should focus on only one component or requirement.

To work with test cases, choose **View > Test Cases** to open the Test Cases list window.

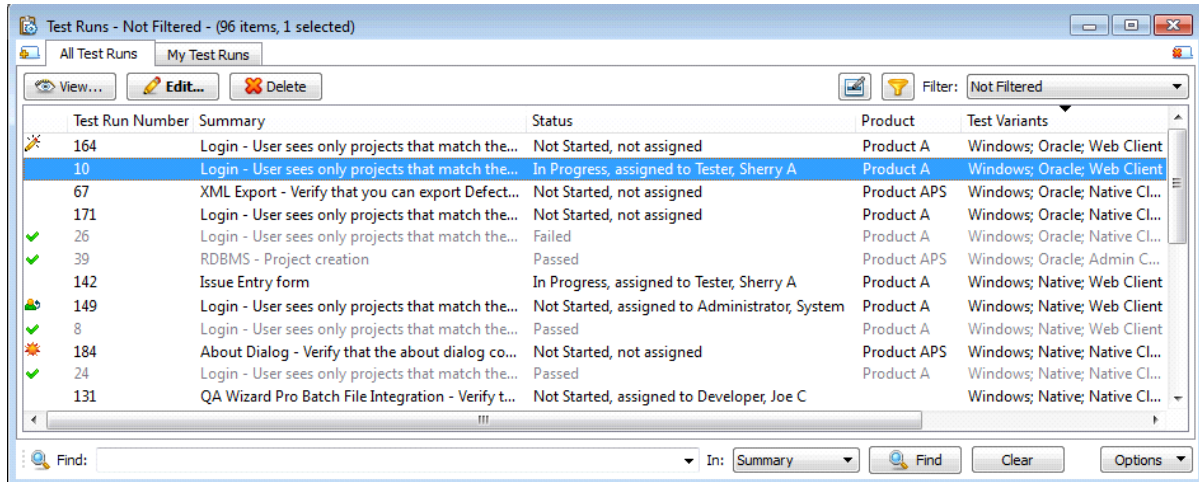


## What are test runs?

Test runs are instances of a test case used to perform a test and document the results. Test runs are generated from a test case, typically at a milestone in the testing cycle. All information is copied from a test case to the related test runs.

A single test case can have one or more related test runs, which are performed against different builds or configurations.

To work with test runs, choose **View > Test Runs** to open the Test Runs list window.



## What are the differences between test cases and test runs?

Test cases generally do not change unless they include incorrect information or the tested application changes. They remain open and are reused to test subsequent builds and releases. Test cases are not used to perform tests and do not include results.

Test runs are only used once to perform a specific test during a testing cycle. Test runs include the test results and are closed after the specific test is performed.

## What information should a test case include?

A test case should include all the information a tester needs to successfully perform a test. It is important to include complete information to avoid ambiguity during testing. All the test case information is copied to test runs when they are generated.

Test cases generally include the following information:

- **Details**—The estimated time to perform the test, a description of the scope of the test, any test environment setup information or other requirements that must be in place before the test is performed, and the expected outcome of the test. Your organization may also use custom fields to capture additional information in the test case details.
- **Steps and expected results**—The specific actions the tester needs to perform, in sequential order. Expected results can be added to each step to describe the outcome of completing the step.

- Supporting files—Any files that can help the tester perform the test can be attached to a test case. You can attach automated scripts, source code files, or other files, such as requirements, test data, or screenshots.

To create a test case, choose **Create > Test Case** or click **Add** on the Test Cases list window.

**Add Test Case**

**Summary:** Login - User sees only projects that match their security settings for projects

Status: Draft, not assigned

Type: Security  Automated test

Overview Detail Steps Variants Files Test Runs Workflow Links Folders History

Estimated run time: (hh:mm:ss) 0 : 30 : 0

Custom Fields:

Product: Activity Professional Suite (APS)

Component: Client

Description: Verifies that a user only sees projects that match their permissions on the login dialog.

Scope: All platforms, databases, and clients

Pre-Conditions:

1. Create a new global user in the license server admin
2. Verify that you have 3 or more projects to work with
3. Retrieve the newly created global user to only 2 of the projects

Expected Results: The user only sees the projects they were added to.

Generate Test Runs... Apply Add Cancel

## How do I reuse steps across multiple test cases?

You may have multiple test cases that include the same subset of steps. For example, several test cases may include steps for logging in to an application. Instead of maintaining the steps separately in each test case, you can create one test case that includes the login steps and share the steps in other test cases. Using modular test cases and sharing steps can help you write test cases more quickly and reduce maintenance effort when steps change.

When you insert shared steps in a test case, a hyperlink to the shared test case is added to the test case. When test runs are generated, all steps from the shared test case and any attachments are included in the test runs.

To share test case steps, create the original test case and then click **Insert Shared Steps** on the Steps tab when creating other test cases you want to share the steps with.

## How do I use a single test case to support multiple configurations?

If the same test needs to be performed against different builds or configurations, you can use one test case to cover all the required tests.

Helix ALM includes test variants, which represent the variable elements of an application that need to be tested, such as multiple platforms, databases, or client types. When you generate test runs, you select the test variant values to use. A test run is created for each unique combination of the selected variant values.

For example, if you test a web-based application in multiple browsers, you can create a Browser test variant with Internet Explorer, Firefox, Safari, and other browsers as the variant values. When you generate test runs, unique test runs are generated for each browser you select.

The Helix ALM administrator or another high-level user generally configures test variants. To create test variants, choose **Tools > Custom Fields** and then select **Test Variants** as the Type.

## How do I make sure that only valid test variants are used?

When you generate test runs, every test variant value is available. While this makes it easy to quickly generate a large number of test cases, you could end up with dozens of test runs that do not apply to the test case. Instead, you can add the variant values in test cases to always include or exclude them when test runs are generated.

- Included test variant values are always used to generate test runs. If you add included test variant values to a test case, no other values will be used to generate test runs.
- Excluded test variant values are never used to generate test runs. If you add excluded test variant values to a test case, all values except the excluded values will be used to generate test runs.

To include or exclude test variant values in test cases, click the **Variants** tab in the Add Test Case or Edit Test Case dialog box.

The screenshot shows the 'Variants' tab in a software application. It contains two main sections:

- Included Test Variant Values:** A table with columns 'Variant Name' and 'Value'. One entry is 'Operating System' with the value 'Windows'. To the right of the table are three buttons: 'Add Variant...', 'Edit Variant...', and 'Remove Variant...'.
- Excluded Test Variant Values:** A table with columns 'Variant Name' and 'Value'. One entry is 'Client Type' with the value 'SOAP Client, Admin Client'. To the right of the table are three buttons: 'Add Variant...', 'Edit Variant...', and 'Remove Variant...'.

**Note:** If you add included test variant values and do not add excluded values, all test runs include all variant values. Make sure you add excluded test variant values if the test case does not apply to a specific variant value.

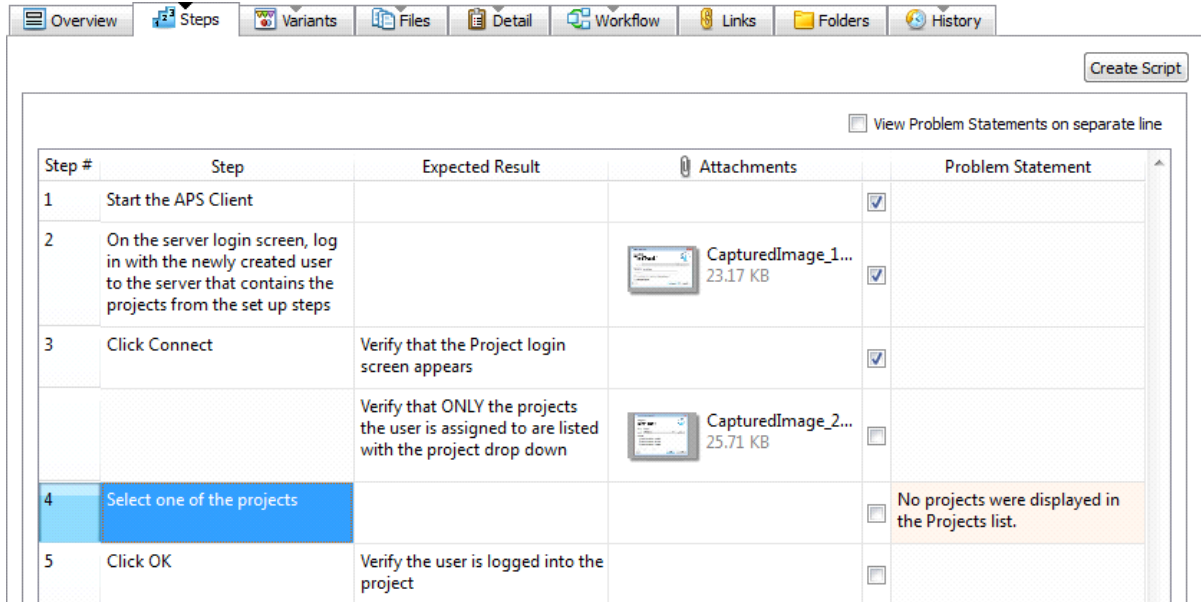
## What information do test runs include?

When test runs are generated, all information from the related test case is copied to the test runs. Test runs also include the test results entered by the user who performed the test.

**Note:** If test cases have custom fields that need to be included in test runs, the Helix ALM administrator or another high-level user must map the test case fields to the corresponding test run custom fields. Choose **Tools > Administration > Item Mapping Rules** and select **Generate Test Runs from Test Cases** as the Type.

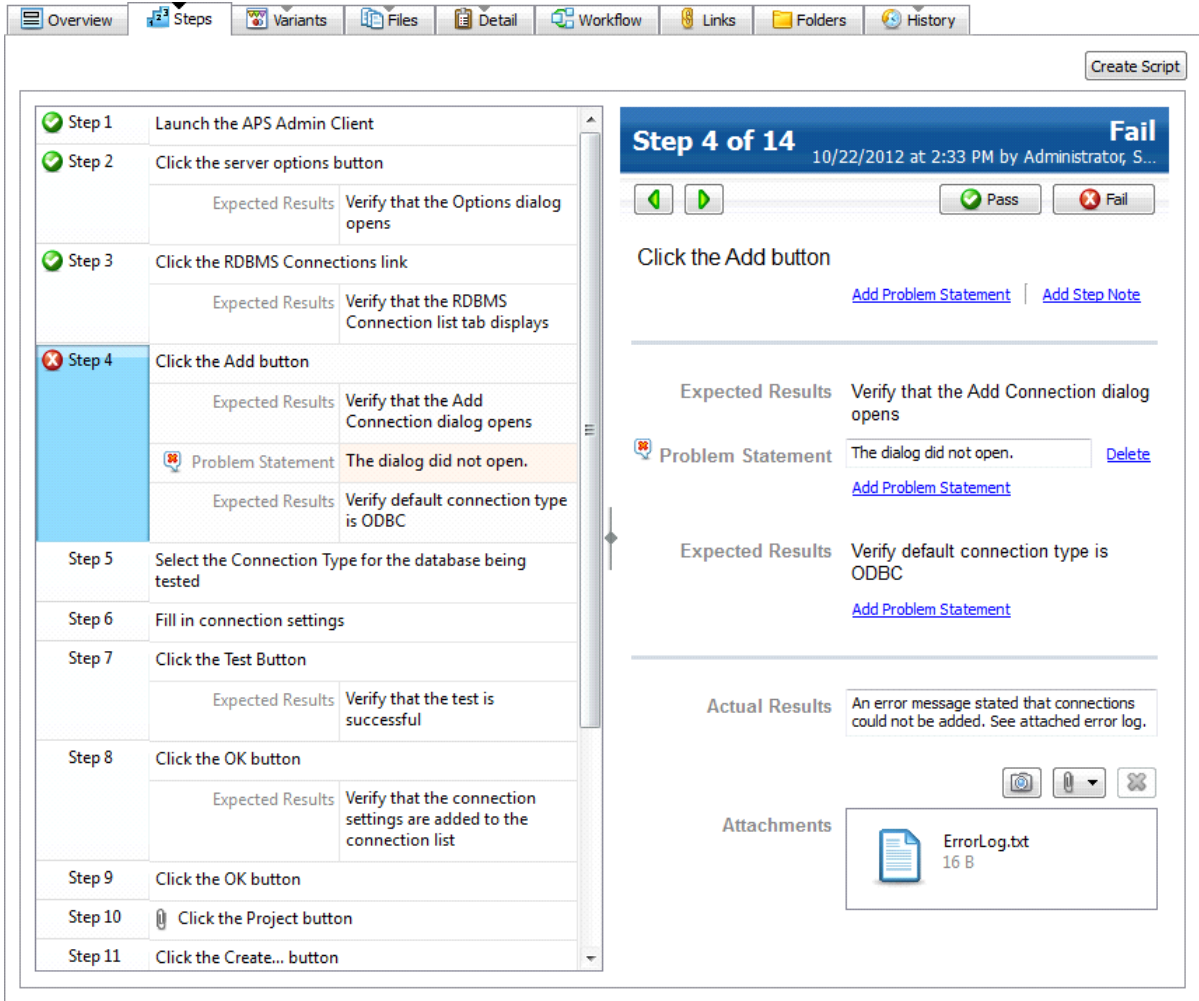
Test case steps can be displayed in different views in test runs:

- **Grid view** displays steps and expected results in rows and columns. This is the most basic view of the test case steps. Use this view if you only need to perform steps, mark them as complete, and add problem statements to indicate where issues occur during the test.

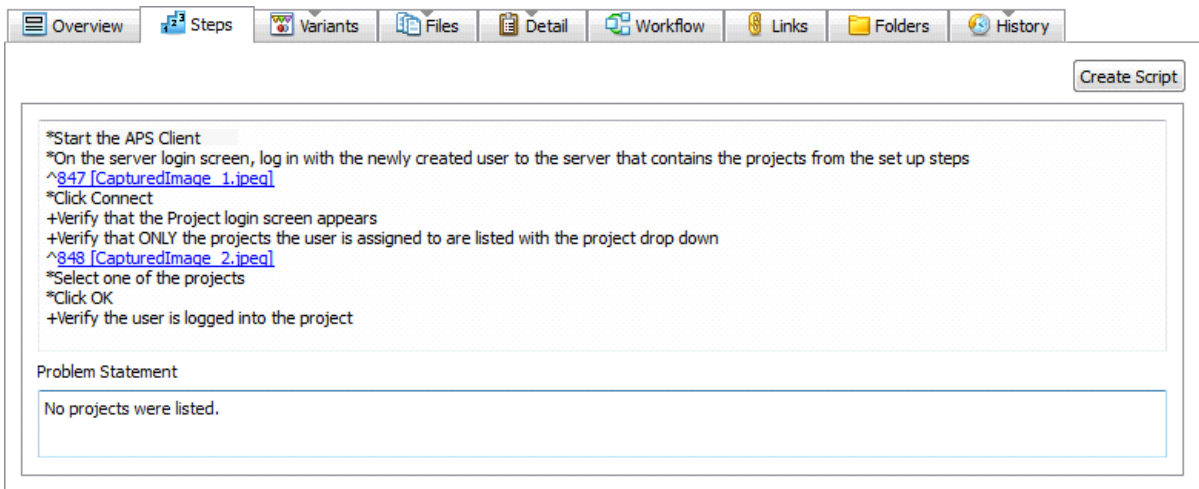


- **Detail grid view** displays an overview pane that provides a read-only view of the entire test run and a detail pane that guides you step-by-step through the test run. You can enter results (Pass, Fail, Undetermined) for each step in this view. Use this view if you are testing in a regulated environment or need to meet compliance requirements. In this view, you can pass or fail each step and include detailed information for each step, such as the actual results and file attachments to provide evidence that the test was performed.

What information do test runs include?

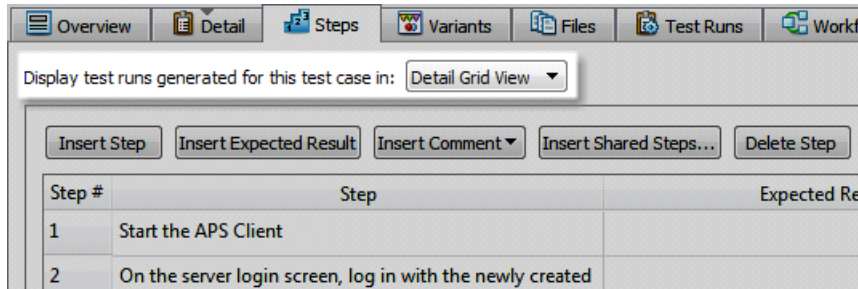


- **Text view** displays steps as text. Markup codes indicate the type of text on each line. Use this view if you are comfortable using markup code and want to quickly add test run results or if you need to paste results from another source, such as a text file.





You can select the steps view in the **Display test runs generated for this test case in** field on the test case Steps tab. You may not be able to select a view depending on the project options.

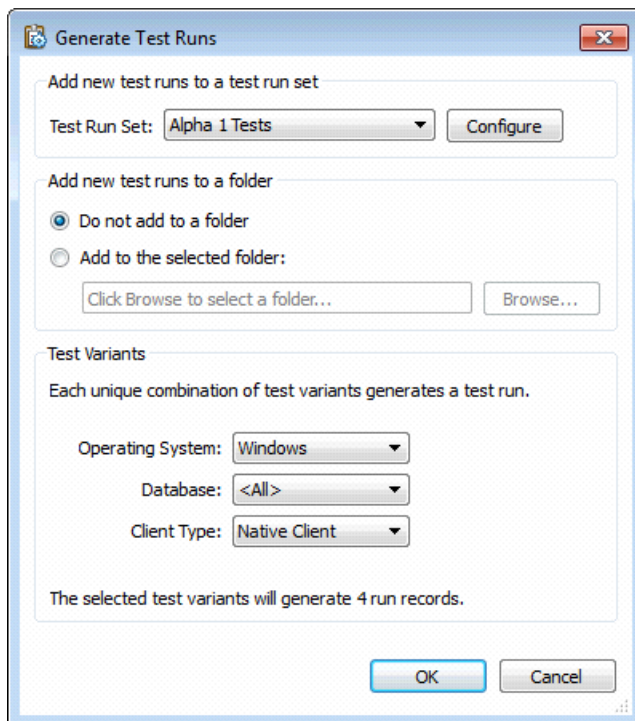


## When should I generate test runs?

Test runs are typically generated when test cases are complete and the product is ready for testing. You may want to generate test runs at the beginning of each testing phase so you can more easily track the test cases that test runs have been generated for. This can also help you evaluate how many test runs still need to be performed so you can determine the status of the testing cycle. For example, generate test cases at the beginning of the Alpha testing phase, at the beginning of the Beta testing phase, and for each Beta build.

Depending on your organization's workflow, you may only be able to generate test runs from test cases in a specific state. For example, the default test cases workflow only allows you to generate test runs for test cases in the Ready state.

To generate test runs, select a test case on the Test Cases list window and choose **Activities > Generate Test Runs**.



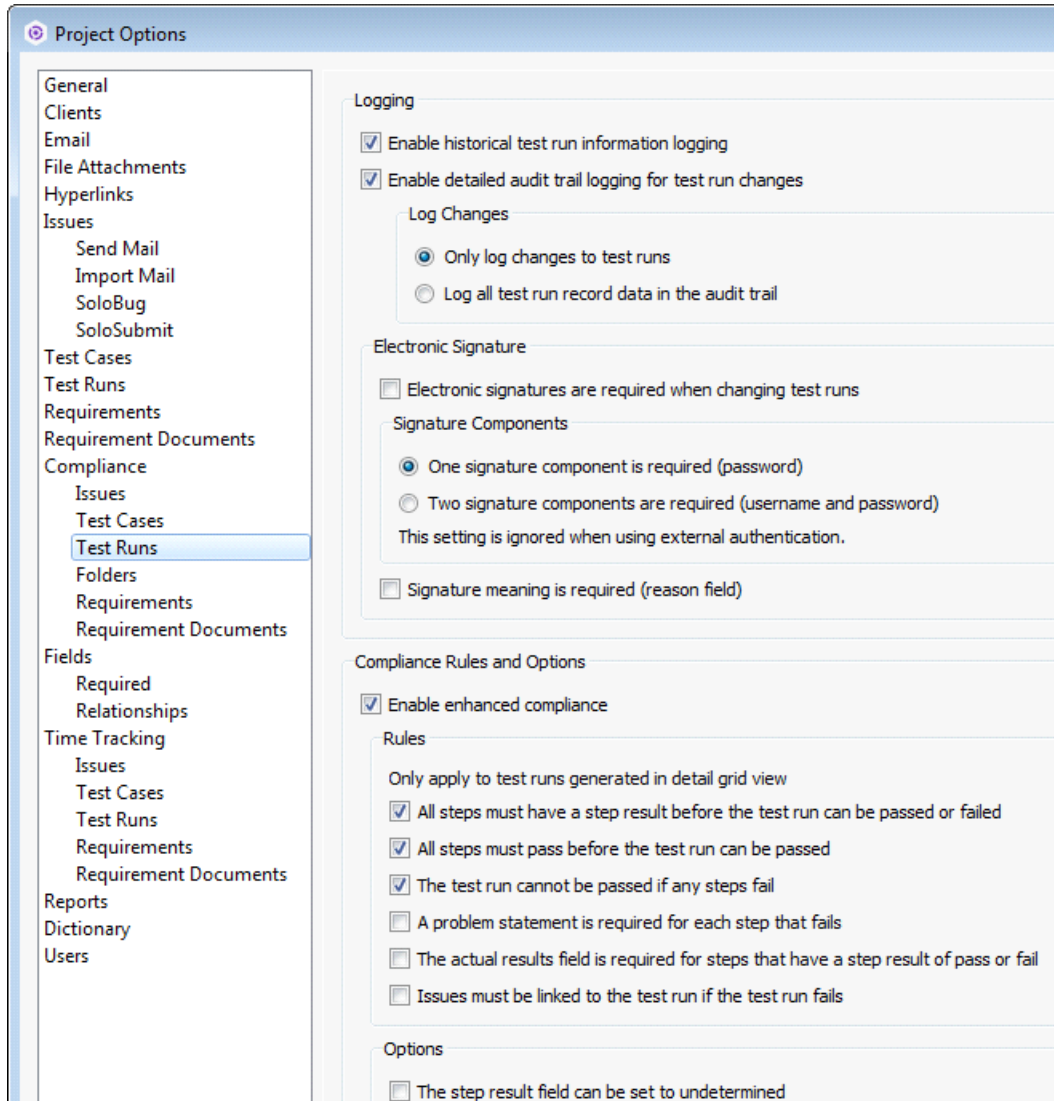
## How do I enable test run compliance options?

If you need to ensure your organization's testing practices are followed or must comply with specific standards and regulations, the Helix ALM administrator or another high-level user may want to enable enhanced compliance for test runs.

If enhanced compliance is enabled, all test runs are generated in detail grid view. Additional options are available to enforce the following rules before test runs are saved:

- All steps must have a step result before the test run can be passed or failed
- All steps must pass before the test run can be passed
- The test run cannot be passed if any steps fail
- A problem statement is required for each step that fails
- The actual results field is required for steps that have a step result of pass or fail
- An issue must be linked to the test run if the test run fails
- The step result field cannot be set to undetermined

To enable enhanced compliance options, choose **Tools > Administration > Project Options** and then select **Test Runs** from the Compliance category.



Keep in mind that the test runs workflow can also be customized to define the path a test run takes from start to close.

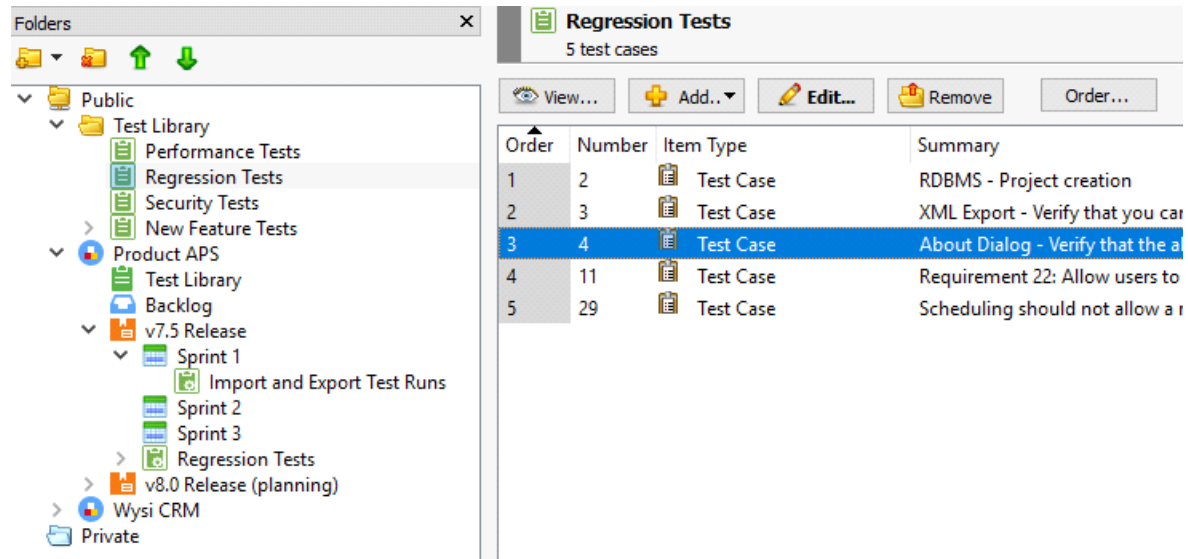
## How can I organize test cases and test runs?

You may already use test suites. Test suites are collections or series of related tests. In Helix ALM, you can use folders for test suites. For example, you may want to group tests based on testing phase, purpose, functional area, or other criteria. Using test suites helps you more easily reuse test cases, keep tests organized, and run tests in the correct order if needed.

Helix ALM has two types of folders used exclusively for test case management:

- Test case suites, which can only contain test cases or other test case suite folders.
- Test run suites, which can only contain test runs or other test run suite folders.

The following example shows how test case and test run suite folders can be used to group related tests. See the [Helix ALM help](#) for best practices for setting up test suite folders.



Test runs can be added to test run sets when they are generated. Test run sets are similar to folders, but the test run set is displayed in the Edit Test Run and View Test Run dialog boxes. For example, you may want to create a test run set for each milestone in the testing cycle. This can help you when it is time to generate reports to evaluate testing progress.

**Note:** The Helix ALM administrator or another high-level user generally configures folders, custom fields, and test run sets.

## How do I use a test run to perform a test?

When a test run is assigned to you, open it and review information on the following tabs before you perform the test.

- The Detail tab includes general information about the test, including any setup instructions.
- The Steps tab includes the steps, expected results, and files you need to perform the test. You enter actual results observed during the test on this tab.
- The Variants tab includes the information about the variable elements of the application that need to be tested. This information can help you make sure you are using the correct environment to perform the test.
- The Files tab may include files or scripts you need to perform the test.

Perform each step as described on the Steps tab. If the actual result is different from the expected result, add problem statements and attachments, such as screenshots, to explain the issues. You may also be able to pass or fail each step.

Next, indicate if the test passed, failed, or if the results were unclear. Choose **Activities > Enter Results** and select a resulting state to indicate the test result. The test run moves to this status when you save it.

## How do I print test runs to use when performing a test?

You can print detail reports to use when you perform a test. To create a test run detail report, choose **Create > Report**. Select **Detail** and click **OK**. Select **Test Runs** from the Report contains field.

Test run detail reports include all information about a test run. You can use this report to review the workflow for a test run to understand where it stands in your testing process and the next steps. To print the report, click the Print button in the Edit Test Case dialog box and make sure the TestRunDetailReport.xslt stylesheet is selected.

Test run checklist reports include the test run details in a format you can use for handwritten information. You can use this report to perform a test and capture the results if Helix ALM is not installed on the test computer or you want to write the results before entering them in Helix ALM. To create this report, make sure the TestRunStepsDetailReport.xslt stylesheet is selected. The following example shows a test run checklist report.

## Helix ALM | Test Run Checklist

**Test Run Number: 1**

**Test Case Number: 1**  
**Summary:** Login - User sees only projects that match their security settings for projects  
**Status:** Passed  
**Type:** Security

**Is An Automated Test:** false      **Test Run Set:** Alpha 1 Tests

Steps:	Step #	Step	Expected Result	Status
<input type="checkbox"/>	1	Start the APS Client		<input type="checkbox"/>
<input type="checkbox"/>	2	On the server login screen, log in with the newly created user to the server that contains the projects from the set up steps		<input type="checkbox"/>
<input type="checkbox"/>	3	Click Connect	Verify that the Project login screen appears	<input type="checkbox"/>
<input type="checkbox"/>			Verify that ONLY the projects the user is assigned to are listed with the project drop down	<input type="checkbox"/>
<input type="checkbox"/>	4	Select one of the projects		<input type="checkbox"/>
<input type="checkbox"/>	5	Click OK	Verify the user is logged into the project	<input type="checkbox"/>

**Coverage Values:**

Generated Test Coverage Attributes:	Attribute Name	Value
	Operating System Variant	Solaris
	Database Variant	MySQL
	Client Type Variant	Web Client

**Run Results**

**Date and time you started this test run:** \_\_\_\_\_  
**Date and time you completed this test run:** \_\_\_\_\_  
**How much time did it take you to complete this test run?** \_\_\_\_\_  
**Were any additional test variants tested?** \_\_\_\_\_  
**What was the result of this test run?**       Passed    Failed

**Describe any problems encountered in running these steps (include a step number and generated issue number if possible):**  
 \_\_\_\_\_  
 \_\_\_\_\_  
 \_\_\_\_\_

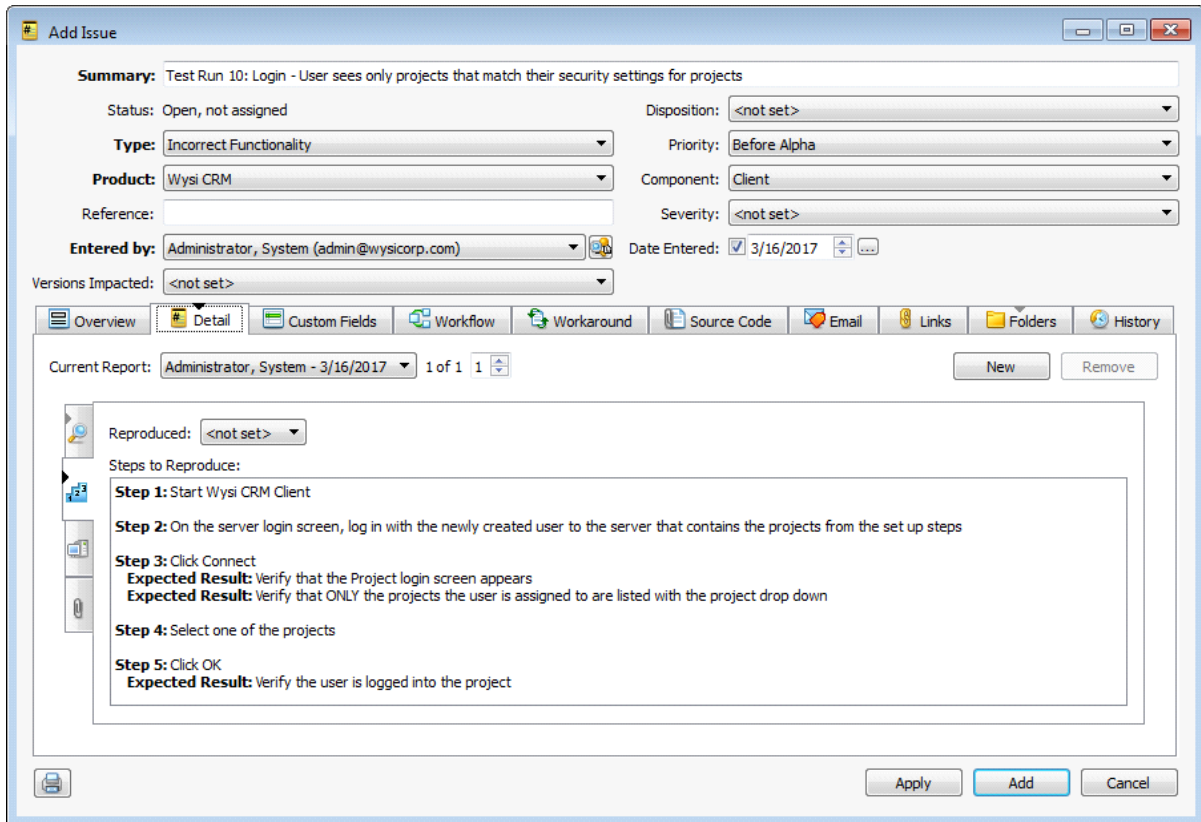
**Signature:** \_\_\_\_\_      **Date:** \_\_\_\_\_

## What should I do if a test fails?

If your organization uses an issue management tool, add an issue for the failed test to push the failure into your workflow so it can be fixed and retested.

If your organization uses Helix ALM issue management, you can add an issue from the failed test run. The test run information is copied to the issue so other users can review the steps to reproduce the problem when fixing the issue or verifying the fix.

To create an issue from a test run, click **Create Issue** in the Edit Test Run dialog box.



After the issue is fixed, you can regenerate the test run so the test can be performed again.

**Note:** The Helix ALM administrator or another high-level user can change the information copied to issues from the test runs they are created from. Choose **Tools > Administration > Item Mapping Rules** and select **Create Issue from Test Run** as the Type.

## How do I determine how much testing remains?

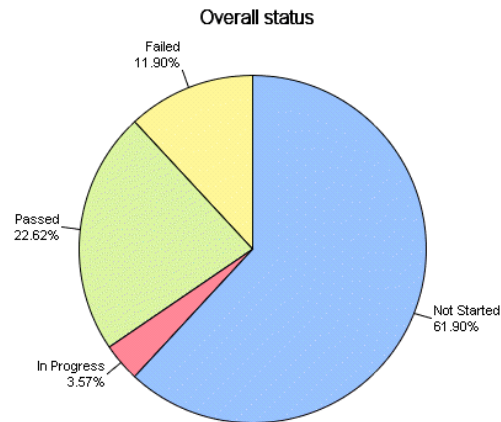
You can create a distribution report based on test run sets to view a snapshot of test runs at a specific point in the testing cycle. For example, as you approach the end of the Alpha testing phase, generate a distribution report based on the Alpha test run set to see how much testing remains. To create a test run distribution report, choose **Create > Report**. Select **Distribution** and click **OK**. Select **Test Runs** from the Report contains field.

Test run status by test run set reports includes the status of test runs in each test run set. This report can help you determine how many test runs are waiting, in progress, on hold, or completed for each test run set. To create this report, select the **Status by** option and then select **Test Run Set** from the corresponding list. The following example shows the test run status report.

## Helix ALM | Test Run Results by Run Set

**Report:** from first test run found through last test run found

	Alpha 1 Tests	Alpha 2 Tests	Alpha 4 Tests	Totals
Not Started	44	4	4	52
In Progress	3	0	0	3
Passed	19	0	0	19
Failed	10	0	0	10
Totals	76	4	4	



Test run result status by test run set reports include the test run results for each test run set. These reports can help you determine how many test runs in each test run set are passed, failed, or undetermined. To create this report, select **Run result status by** and then select **Test Run Set** from the corresponding list.

## How can I use Helix ALM with my automated testing tool?

Helix ALM integrates with QA Wizard Pro and other automation tools, making it easy to manage your manual and automated tests and test results from one application.

To accurately automate a manual test, you simply follow the steps from the corresponding test case while recording the automated test. To create automated tests from Helix ALM, click the **Steps** tab in the open test case and click **Create Script**.

After creating automated tests, you can automatically attach result reports to test runs instead of manually entering results. You can also configure Helix ALM to automatically move test runs through the workflow based on automated test results.

If you use QA Wizard Pro, you can also record steps for new test cases instead of manually entering them, which saves time when creating regression test cases. See the [QA Wizard Pro help](#) for information about recording test case steps and automated tests.

