

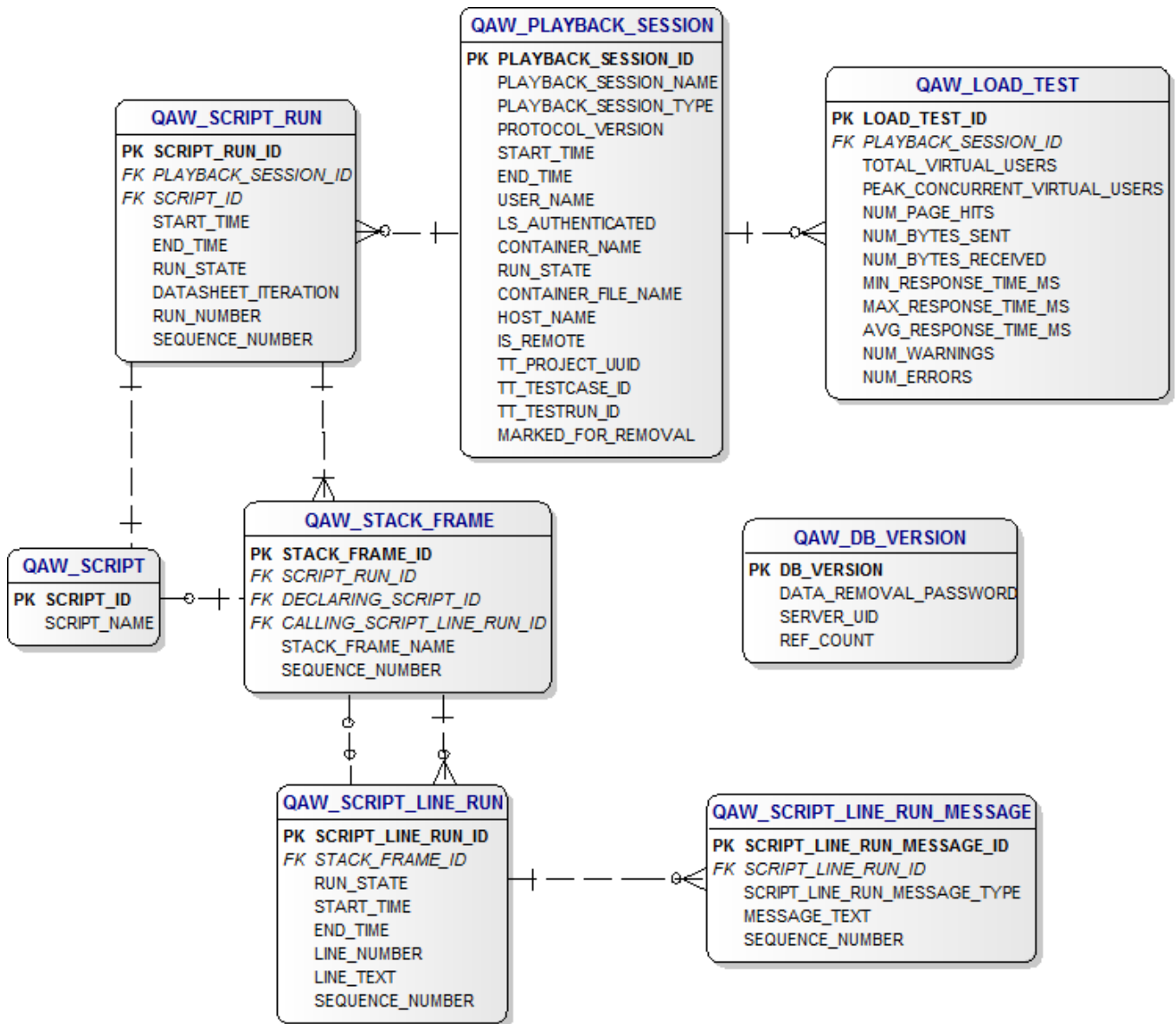
QA Wizard Pro Server Database Reference Guide

Version 2016.2

Contents

ER diagram	1
Data dictionary	2
Table: QAW_DB_VERSION.....	2
Table: QAW_LOAD_TEST.....	2
Table: QAW_PLAYBACK_SESSION.....	3
Table: QAW_SCRIPT.....	4
Table: QAW_SCRIPT_LINE_RUN.....	4
Table: QAW_SCRIPT_LINE_RUN_MESSAGE.....	5
Table: QAW_SCRIPT_RUN.....	5
Table: QAW_STACK_FRAME	6

ER diagram



Data dictionary

Table: QAW_DB_VERSION	
Primary key constraint name	PK_QAW_DB_VERSION
Comment	Contains QA Wizard Pro Server metadata. Identifies the database and QA Wizard Pro Server using the database.

Columns:

Column name	Primary key	Data type	Not NULL	Comment
DB_VERSION	Yes	VARCHAR(256)	Yes	QA Wizard Pro database version string
DATA_REMOVAL_PASSWORD	No	VARCHAR(1024)	No	Data removal password
SERVER_UID	No	VARCHAR(256)	Yes	QA Wizard Pro Server globally unique identifier. GUID is in string form.
REF_COUNT	No	INTEGER	Yes	QA Wizard Pro Server reference count

Table: QAW_LOAD_TEST	
Primary key constraint name	PK_QAW_LOAD_TEST
Comment	Represents a load test. Provides information about load test playback sessions.

Columns:

Column name	Primary key	Data type	Not NULL	Comment
LOAD_TEST_ID	Yes	BIGINT	Yes	Load test unique identifier
PLAYBACK_SESSION_ID	No	BIGINT	Yes	Load test playback session unique identifier
TOTAL_VIRTUAL_USERS	No	INTEGER	Yes	Total number of virtual users for the load test
PEAK_CONCURRENT_VIRTUAL_USERS	No	INTEGER	Yes	Peak number of virtual users running concurrently during the load test
NUM_PAGE_HITS	No	INTEGER	Yes	Number of page hits during the load test
NUM_BYTES_SENT	No	BIGINT	Yes	Total number of bytes sent during the load test
NUM_BYTES_RECEIVED	No	BIGINT	Yes	Total number of bytes received during the load test
MIN_RESPONSE_TIME_MS	No	BIGINT	Yes	Minimum time it took the server to respond in milliseconds
MAX_RESPONSE_TIME_MS	No	BIGINT	Yes	Maximum time it took the server to respond in milliseconds
AVG_RESPONSE_TIME_MS	No	BIGINT	Yes	Average time it took the server to respond in milliseconds
NUM_WARNINGS	No	BIGINT	Yes	Total number of warnings that occurred during the load test
NUM_ERRORS	No	BIGINT	Yes	Total number of errors that occurred during the load test

Table: QAW_PLAYBACK_SESSION	
Primary key constraint name	PK_QAW_PLAYBACK_SESSION
Comment	User-initiated session that performs a test in QA Wizard Pro. From the user interface, the run starts from the Run, Run Main Script, Run Multiple, Run Remote, Run Main Script Remote, Run Multiple Remote, or RunLoadTest commands. Debug and Record Into commands are not included because they are not recorded. From the command line, the run starts using QAWRunScript or QAWRunLoadTest with any options.

Columns:

Column name	Primary key	Data type	Not NULL	Comment
PLAYBACK_SESSION_ID	Yes	BIGINT	Yes	Playback session unique identifier
PLAYBACK_SESSION_NAME	No	VARCHAR(1024)	No	Name set for the playback session
PLAYBACK_SESSION_TYPE	No	SMALLINT	Yes	Playback session type - 0: Run, 1: Batch, 2: Load Test
PROTOCOL_VERSION	No	SMALLINT	Yes	Database version the playback session was created in
START_TIME	No	DATETIME	Yes	Date and time the playback session started in millisecond precision. UTC format.
END_TIME	No	DATETIME	No	Date and time the playback session ended in millisecond precision. UTC format.
USER_NAME	No	VARCHAR(256)	Yes	Username that initiated the playback session. May not be the username that ran the playback session. For example, the username "bob" may start a remote load test from his workstation, but the remote computer may be set up to run as "automationuser". In this case, the USER_NAME value is "bob".
LS_AUTHENTICATED	No	BIT	Yes	Indicates if the playback session user authenticated with the Seapine License Server
CONTAINER_NAME	No	VARCHAR(1024)	No	Playback session container (workspace or batch logical name), if available
RUN_STATE	No	INTEGER	Yes	Run state for the entire playback session - 0: Active, 1: Succeeded, 2: Failed, 3: Inactive (has not sent information to the server in over 30 minutes), 4: Canceled
CONTAINER_FILE_NAME	No	VARCHAR(1024)	No	Playback session container (workspace or batch file name with extension), if available
HOST_NAME	No	VARCHAR(256)	No	For standard tests, host name the playback session occurred on. For load tests, name of the initiating host, even if the test was distributed across multiple hosts.

Column name	Primary key	Data type	Not NULL	Comment
IS_REMOTE	No	BIT	No	Indicates if the playback session was run remotely. Null indicates the value is not relevant. Load test value is always null.
TT_PROJECT_UUID	No	VARCHAR(38)	No	Unique identifier for the TestTrack project the associated test run is included in. Null indicates the playback session was not associated with a test run. Foreign key to TT_PROJECT.TT_PROJECT_UUID in the Seapine ALM Data Warehouse.
TT_TESTCASE_ID	No	NUMERIC(10)	No	Unique identifier for the TestTrack test case the associated test run was generated from. Null indicates the playback session not associated with a test run. Foreign key to TT_TESTCASE.TESTCASE_ID in the Seapine ALM Data Warehouse.
TT_TESTRUN_ID	No	NUMERIC(10)	No	Unique identifier for a TestTrack test run. Null indicates the playback session not associated with a test run. Foreign key to TT_TESTRUN.TESTRUN_ID in the Seapine ALM Data Warehouse.
MARKED_FOR_REMOVAL	No	BIT	Yes	Indicates if the playback session is marked to be removed from the database

Table: QAW_SCRIPT

Primary key constraint name	PK_QAW_SCRIPT
Comment	A script that ran.

Columns:

Column name	Primary key	Data type	Not NULL	Comment
SCRIPT_ID	Yes	BIGINT	Yes	Script unique identifier
SCRIPT_NAME	No	VARCHAR(1024)	No	Logical script name. Does not include file system details, such as filename, extension, or path.

Table: QAW_SCRIPT_LINE_RUN

Primary key constraint name	PK_QAW_SCRIPT_LINE_RUN
Comment	An individual script line that ran.

Columns:

Column name	Primary key	Data type	Not NULL	Comment
SCRIPT_LINE_RUN_ID	Yes	BIGINT	Yes	Script line run unique identifier
STACK_FRAME_ID	No	BIGINT	Yes	Frame unique identifier. Groups related script lines in the same context.
RUN_STATE	No	INTEGER	Yes	Run state of the script line run - 0: Active, 1: Not active (succeeded), 2: Not active (failed)

Column name	Primary key	Data type	Not NULL	Comment
START_TIME	No	DATETIME	Yes	Date and time the script line started running in millisecond precision. UTC format.
END_TIME	No	DATETIME	No	Date and time the script line stopped running in millisecond precision. UTC format.
LINE_NUMBER	No	INTEGER	Yes	Line number in the running script. Uses 1-based indexing.
LINE_TEXT	No	VARCHAR(1024)	Yes	Text of the running script line
SEQUENCE_NUMBER	No	BIGINT	Yes	Number used to order events in a playback session. Sets to 1 when a playback session starts and increments when the next event starts.

Table: QAW_SCRIPT_LINE_RUN_MESSAGE	
Primary key constraint name	PK_QAW_SCRIPT_LINE_RUN_MESSAGE
Comment	A message (error, warning, or output) that occurred on a script line during playback.

Columns:

Column name	Primary key	Data type	Not NULL	Comment
SCRIPT_LINE_RUN_MESSAGE_ID	Yes	BIGINT	Yes	Message unique identifier
SCRIPT_LINE_RUN_ID	No	BIGINT	Yes	Script line run unique identifier
SCRIPT_LINE_RUN_MESSAGE_TYPE	No	SMALLINT	Yes	Message type that occurred when running a script line - 0: Warning, 1: Unhandled error, 2: Handled error, 3: Output
MESSAGE_TEXT	No	VARCHAR(1024)	Yes	Message text (if any)
SEQUENCE_NUMBER	No	BIGINT	Yes	Number used to order events in a playback session. Sets to 1 when a playback session starts and increments when the next event starts.

Table: QAW_SCRIPT_RUN	
Primary key constraint name	PK_QAW_SCRIPT_RUN
Comment	An instance of a script that ran.

Columns:

Column name	Primary key	Data type	Not NULL	Comment
SCRIPT_RUN_ID	Yes	BIGINT	Yes	Script run unique identifier
PLAYBACK_SESSION_ID	No	BIGINT	Yes	Playback session unique identifier
SCRIPT_ID	No	BIGINT	Yes	Script unique identifier
START_TIME	No	DATETIME	Yes	Date and time the script run started in the playback session in millisecond precision. UTC format.
END_TIME	No	DATETIME	No	Date and time the script run ended in the playback session in millisecond precision. UTC format.
RUN_STATE	No	SMALLINT	Yes	Run state of the script run - 0: Active, 1: Not active (succeeded), 2: Not active (failed)

Column name	Primary key	Data type	Not NULL	Comment
DATASHEET_ITERATION	No	INTEGER	Yes	If a script has an associated data source, the current row/iteration number of the script run. Uses 1-based indexing. For example, a script that runs once has an associated datasheet with 4 rows. Four script run rows would be included in this table, each with an associated datasheet iteration number (1, 2, 3, 4).
RUN_NUMBER	No	INTEGER	Yes	Indicates the nth time a script runs within a playback session, regardless of the reason. Uses 1-based indexing.
SEQUENCE_NUMBER	No	BIGINT	Yes	Number used to order events in a playback session. Sets to 1 when a playback session starts and increments when the next event starts.

Table: QAW_STACK_FRAME	
Primary key constraint name	PK_QAW_STACK_FRAME
Comment	A group of related script lines in the context of a script, function, or subroutine call or Try, Catch, or Finally block. Provides a logical division of the script run. A new frame is created for each context and added to the call stack.

Columns:

Column name	Primary key	Data type	Not NULL	Comment
STACK_FRAME_ID	Yes	BIGINT	Yes	Frame unique identifier. Groups related script lines in the same context.
SCRIPT_RUN_ID	No	BIGINT	Yes	Script run unique identifier
DECLARING_SCRIPT_ID	No	BIGINT	No	Unique identifier of the script the context was declared in
CALLING_SCRIPT_LINE_RUN_ID	No	BIGINT	No	Script line run parent unique identifier. For example, in the context of a function call, this identifies the script line that calls the function.
STACK_FRAME_NAME	No	VARCHAR(1024)	No	Frame name that describes the context. In the context of a called script, function, or subroutine, the called item's name is used. In the context of a Try, Catch, or Finally block, the block name is used.
SEQUENCE_NUMBER	No	BIGINT	Yes	Number used to order events in a playback session. Sets to 1 when a playback session starts and increments when the next event starts.